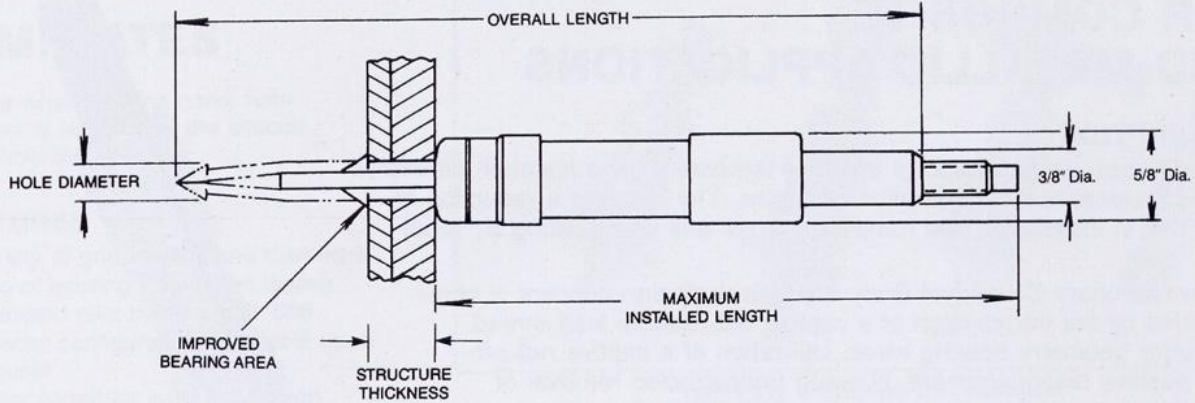




# POWER OPERATED CYLINDRICAL BODY FASTENERS



## FRACTIONAL SIZES — CYLINDRICAL BODY SERIES

HOLE DIA. (inches)	STANDARD				SPRING LOADED				COLOR CODE	DRILL SIZE
	GRIP RANGE (inches)	PART NO.	BODY LENGTH		GRIP RANGE (inches)	PART NO.	BODY LENGTH			
			OVERALL (inches)	INSTALLED (inches)			OVERALL (inches)	INSTALLED (inches)		
3/32	0—1/2	CBX-BF-3/32	4-1/32	3-23/64	0—1/2	CSX-BF-5/32	4-17/32	3-27/32	ZINC	#40
	0—1	CBXL-BF-3/32	5-1/32	4-23/64	1/2—1	CSXL-BF-5/32	5-1/32	3-27/32		
	1/2—1-1/2	CBXEL-BF-3/32	5-17/32	4-23/64	1—1-1/2	CSXEL-BF-5/32	5-17/32	3-27/32		
1/8	0—1/2	CBX-BF-1/8	4-1/16	3-23/64	0—1/2	CSX-BF-1/8	4-9/16	3-27/32	COPPER	#30
	0—1	CBXL-BF-1/8	5-1/16	4-23/64	1/2—1	CSXL-BF-1/8	5-1/16	3-27/32		
	1/2—1-1/2	CBXEL-BF-1/8	5-9/16	4-23/64	1—1-1/2	CSXEL-BF-1/8	5-9/16	3-27/32		
	1-1/2—2-1/2	CBXK-BF-1/8	6-9/16	4-23/64	2—2-1/2	CSXK-BF-1/8	6-9/16	3-27/32		
5/32	0—1/2	CBX-BF-5/32	4-3/32	3-23/64	0—1/2	CSX-BF-5/32	4-19/32	3-27/32	BLACK	#20
	0—1	CBXL-BF-5/32	5-3/32	4-23/64	1/2—1	CSXL-BF-5/32	5-3/32	3-27/32		
	1/2—1-1/2	CBXEL-BF-5/32	5-9/16	4-23/64	1—1-1/2	CSXEL-BF-5/32	5-9/16	3-27/32		
	1-1/2—2-1/2	CBXK-BF-5/32	6-5/8	4-23/64	2—2-1/2	CSXK-BF-5/32	6-5/8	3-27/32		
3/16	0—1/2	CBX-BF-3/16	4-1/8	3-23/64	0—1/2	CSX-BF-3/16	4-5/8	3-27/32	BRASS	#10
	0—1	CBXL-BF-3/16	5-1/8	4-23/64	1/2—1	CSXL-BF-3/16	5-1/8	3-27/32		
	1/2—1-1/2	CBXEL-BF-3/16	5-5/8	4-23/64	1—1-1/2	CSXEL-BF-3/16	5-5/8	3-27/32		
	1-1/2—2-1/2	CBXK-BF-3/16	6-5/8	4-23/64	2—2-1/2	CSXK-BF-3/16	6-5/8	3-27/32		
7/32	0—1/2	CBX-BF-7/32	4-9/64	3-23/64	0—1/2	CSX-BF-7/32	4-39/64	3-27/32	ZINC	#2
	0—1	CBXL-BF-7/32	5-9/64	4-23/64	1/2—1	CSXL-BF-7/32	5-7/64	3-27/32		
	1/2—1-1/2	CBXEL-BF-7/32	5-41/64	4-23/64	1—1-1/2	CSXEL-BF-7/32	5-39/64	3-27/32		
	1-1/2—2-1/2	CBXK-BF-7/32	6-41/64	4-23/64	2—2-1/2	CSXK-BF-7/32	6-41/64	3-27/32		
1/4	0—1/2	CBX-BF-1/4	4-5/32	3-23/64	0—1/2	CSX-BF-1/4	4-21/32	3-27/32	COPPER	1/4"
	0—1	CBXL-BF-1/4	5-5/32	4-23/64	1/2—1	CSXL-BF-1/4	5-5/32	3-27/32		
	1/2—1-1/2	CBXEL-BF-1/4	5-21/32	4-23/64	1—1-1/2	CSXEL-BF-1/4	5-21/32	3-27/32		
	1-1/2—2-1/2	CBXK-BF-1/4	6-21/32	4-23/64	2—2-1/2	CSXK-BF-1/4	6-21/32	3-27/32		
9/32	0—1/2	CBX-BF-9/32	4-5/32	3-23/64	0—1/2	CSX-BF-9/32	4-21/32	3-27/32	BRASS	9/32"
	0—1	CBXL-BF-9/32	5-5/32	4-23/64	1/2—1	CSXL-BF-9/32	5-5/32	3-27/32		
	1/2—1-1/2	CBXEL-BF-9/32	5-21/32	4-23/64	1—1-1/2	CSXEL-BF-9/32	5-21/32	3-27/32		
	1-1/2—2-1/2	CBXK-BF-9/32	6-21/32	4-23/64	2—2-1/2	CSXK-BF-9/32	6-21/32	3-27/32		
5/16	0—1/2	CBX-BF-5/16	4-5/32	3-23/64	0—1/2	CSX-BF-5/16	4-21/32	3-27/32	BLACK	5/16"
	0—1	CBXL-BF-5/16	5-5/32	4-23/64	1/2—1	CSXL-BF-5/16	5-5/32	3-27/32		
	1/2—1-1/2	CBXEL-BF-5/16	5-21/32	4-23/64	1—1-1/2	CSXEL-BF-5/16	5-21/32	3-27/32		
	1-1/2—2-1/2	CBXK-BF-5/16	6-21/32	4-23/64	2—2-1/2	CSXK-BF-5/16	6-21/32	3-27/32		
3/8	0—1/2	CBX-BF-3/8	4-1/4	3-23/64	0—1/2	CSX-BF-3/8	4-3/4	3-7/8	BLACK WITH BRASS CAP	3/8"
	0—1	CBXL-BF-3/8	5-1/4	4-23/64	1/2—1	CSXL-BF-3/8	5-1/4	3-7/8		
	1/2—1-1/2	CBXEL-BF-3/8	5-3/4	4-23/64	1—1-1/2	CSXEL-BF-3/8	5-3/4	3-7/8		
	1-1/2—2-1/2	CBXK-BF-3/8	6-3/4	4-23/64	2—2-1/2	CSXK-BF-3/8	6-3/4	3-7/8		

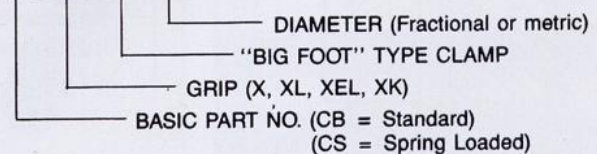
### PROTECTIVE CAPS

Vinyl, Hard Plastic and Aluminum Protective caps are available for use with Monogram's Cylindrical Body Wedgelock series. These caps are designed to protect structure surfaces from galvanic corrosion and scratches.

See page 6 for Ordering Information.

### PART NUMBER EXAMPLE:

#### CBXEL-BF-1/8



# POWER OPERATED CYLINDRICAL BODY FASTENERS



## METRIC SIZES — CYLINDRICAL BODY SERIES

HOLE DIA. (mm)	STANDARD				SPRING LOADED				COLOR CODE		DRILL SIZE (mm)
	GRIP RANGE (mm)	PART NO.	BODY LENGTH		GRIP RANGE (mm)	PART NO.	BODY LENGTH		BODY	NUT	
			OVERALL (mm)	INSTALLED (mm)			OVERALL (mm)	INSTALLED (mm)			
2.5	0-13	CBX-BF-2.5	102.4	85.3	0-13	CSX-BF-2.5	115.1	97.7	Black	Zinc	2.5
	0-25	CBXL-BF-2.5	127.8	110.7	13-25	CSXL-BF-2.5	128.8	97.7			
3.0	0-13	CBX-BF-3.0	103.2	85.3	0-13	CSX-BF-3.0	115.9	97.7	Copper	Copper	3.0
	0-25	CBXL-BF-3.0	128.6	110.7	13-25	CSXL-BF-3.5	128.6	97.7			
3.5	0-13	CBX-BF-3.5	103.6	85.3	0-13	CSX-BF-3.5	116.3	97.7	Copper	Brass	3.5
	0-25	CBXL-BF-3.5	129.0	110.7	13-25	CSXL-BF-3.5	129.0	97.7			
	13-38	CBXEL-BF-3.5	141.7	110.7	25-38	CSXEL-BF-3.5	147.7	97.7			
4.0	0-13	CBX-BF-4.0	104.0	85.3	0-13	CSX-BF-4.0	116.7	97.7	Black	Black	4.0
	0-25	CBXL-BF-4.0	129.8	110.7	13-25	CSXL-BF-4.0	129.4	97.7			
	13-38	CBXEL-BF-4.0	143.3	110.7	25-38	CSXEL-BF-4.0	142.1	97.7			
	38-64	CBXK-BF-4.0	164.4	110.7	51-64	CSXK-BF-4.0	155.1	97.7			
4.5	0-13	CBX-BF-4.5	104.4	85.3	0-13	CSX-BF-4.5	117.1	97.7	Brass	Zinc	4.5
	0-25	CBXL-BF-4.5	129.8	110.7	13-25	CSXL-BF-4.5	129.8	97.7			
	13-38	CBXEL-BF-4.5	142.5	110.7	25-38	CSXEL-BF-4.5	142.5	97.7			
	38-64	CBXK-BF-4.5	167.4	110.7	51-64	CSXK-BF-4.5	155.5	97.7			
5.0	0-13	CBX-BF-5.0	104.8	85.3	0-13	CSX-BF-5.0	117.5	97.7	Brass	Copper	5.0
	0-25	CBXL-BF-5.0	130.2	110.7	13-25	CSXL-BF-5.0	130.2	97.7			
	13-38	CBXEL-BF-5.0	142.9	110.7	25-38	CSXEL-BF-5.0	142.9	97.7			
	38-64	CBXK-BF-5.0	168.4	110.7	51-64	CSXK-BF-5.0	155.9	97.7			
5.5	0-13	CBX-BF-5.5	105.2	85.3	0-13	CSX-BF-5.5	117.9	97.7	Zinc	Black	5.5
	0-25	CBXL-BF-5.5	130.6	110.7	13-25	CSXL-BF-5.5	130.6	97.7			
	13-38	CBXEL-BF-5.5	143.3	110.7	25-38	CSXEL-BF-5.5	143.3	97.7			
	38-64	CBXK-BF-5.5	156.3	110.7	51-64	CSXK-BF-5.5	156.0	97.7			
6.0	0-13	CBX-BF-6.0	105.6	85.3	0-13	CSX-BF-6.0	118.3	97.7	Copper	Copper	6.0
	0-25	CBXL-BF-6.0	131.0	110.7	13-25	CSXL-BF-6.0	131.0	97.7			
	13-38	CBXEL-BF-6.0	143.7	110.7	25-38	CSXEL-BF-6.0	143.7	97.7			
	38-64	CBXK-BF-6.0	156.7	110.7	51-64	CSXK-BF-6.0	156.4	97.7			
6.5	0-13	CBX-BF-6.5	105.6	85.3	0-13	CSX-BF-6.5	118.3	97.7	Copper	Black	6.5
	0-25	CBXL-BF-6.5	131.0	110.7	13-25	CSXL-BF-6.5	131.0	97.7			
	13-38	CBXEL-BF-6.5	143.7	110.7	25-38	CSXEL-BF-6.5	143.7	97.7			
	38-64	CBXK-BF-6.5	155.7	110.7	51-64	CSXK-BF-6.5	156.4	97.7			
7.0	0-13	CBX-BF-7.0	105.6	85.3	0-13	CSX-BF-7.0	118.3	97.7	Copper	Zinc	7.0
	0-25	CBXL-BF-7.0	131.0	110.7	13-25	CSXL-BF-7.0	131.0	97.7			
	13-38	CBXEL-BF-7.0	143.7	110.7	25-38	CSXEL-BF-7.0	143.7	97.7			
	38-64	CBXK-BF-7.0	146.7	110.7	51-64	CSXK-BF-7.0	156.4	97.7			
7.5	0-13	CBX-BF-7.5	105.6	85.3	0-13	CSX-BF-7.5	118.3	97.7	Black	Brass	7.5
	0-25	CBXL-BF-7.5	131.0	110.7	13-25	CSXL-BF-7.5	131.0	97.7			
	13-38	CBXEL-BF-7.5	144.0	110.7	25-38	CSXEL-BF-7.5	143.7	97.7			
	38-64	CBXK-BF-7.5	157.0	110.7	51-64	CSXK-BF-7.5	156.4	97.7			
8.0	0-13	CBX-BF-8.0	105.6	85.3	0-13	CSX-BF-8.0	118.3	97.7	Black	Black	8.0
	0-25	CBXL-BF-8.0	131.0	110.7	13-25	CSXL-BF-8.0	131.0	97.7			
	13-38	CBXEL-BF-8.0	144.0	110.7	25-38	CSXEL-BF-8.0	143.7	97.7			
	38-64	CBXK-BF-8.0	157.0	110.7	51-64	CSXK-BF-8.0	156.4	97.7			

## SIMPLIFIED INSTALLATION TOOLING

- Patented roller bearing drive system allows for faster installation and removal of the fastener.
- No "fastener to tool" orientation problems.
- Drives all diameters and grip accommodations.
- Adaptable to most "speedrunners" currently used for hex body installation.
- Adjustable clamping loads from 100 to 600 pounds.
- Lightweight and compact.

### Ordering Information

Complete installation tool as depicted: W500-28-931-GB  
Speedrunner (nosepiece) only: W931-CB-GB

For additional information on Speedrunner adaptability, contact Monogram Headquarters.

